

Scales Tenor Saxophone

Moving Through the Circle of Fifths by Adding Flats

Created by Ken Dahlin

Concert B Flat Major

C Major



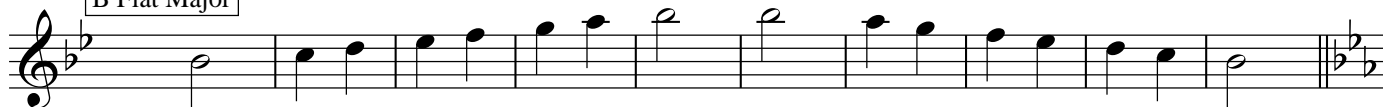
Concert E Flat Major

F Major



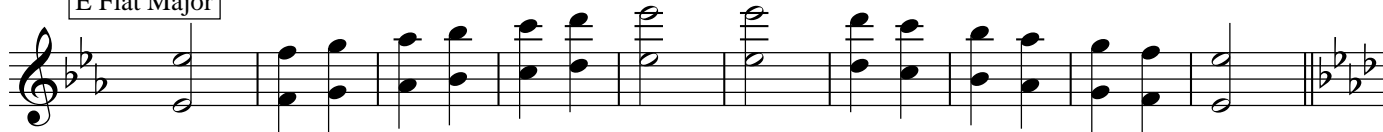
Concert A Flat Major

B Flat Major



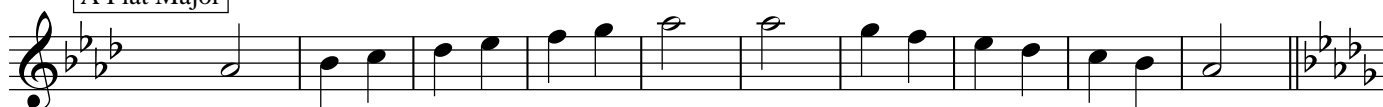
Concert D Flat Major

E Flat Major



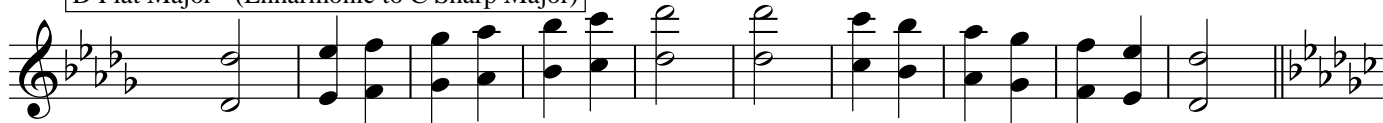
Concert G Flat Major (Enharmonic to F Sharp Major)

A Flat Major



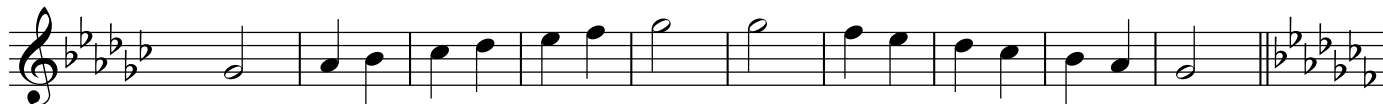
Concert C Flat Major (Enharmonic to B Major)

D Flat Major - (Enharmonic to C Sharp Major)



Concert E Major is enharmonic to an F Flat. (It is not practical to consider F Flat as a major key.)

G Flat Major - (Enharmonic to F Sharp Major)



Concert A Major is enharmonic to a B Double Flat. (It is not practical to consider B Double Flat as a major key.)

C Flat Major - Enharmonic to B Major - 5 Sharps



Scales for B Tenor Saxophone

Moving Through the Circle of Fifths by Adding Sharps

Created by Ken Dahlin

Concert B Flat Major

C Major



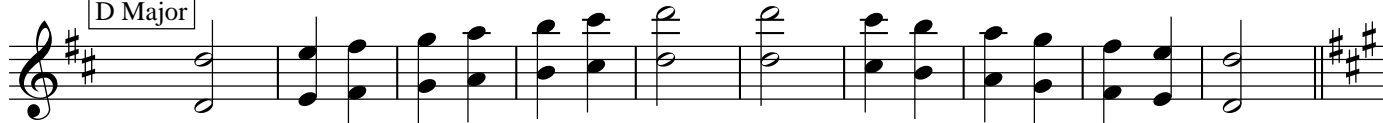
Concert F Major

G Major



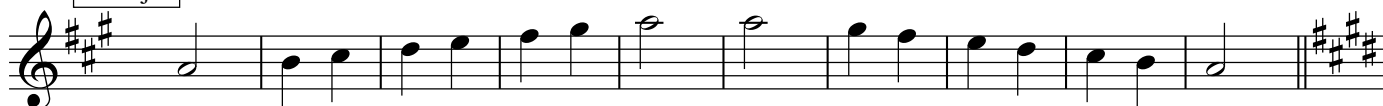
Concert C Major

D Major



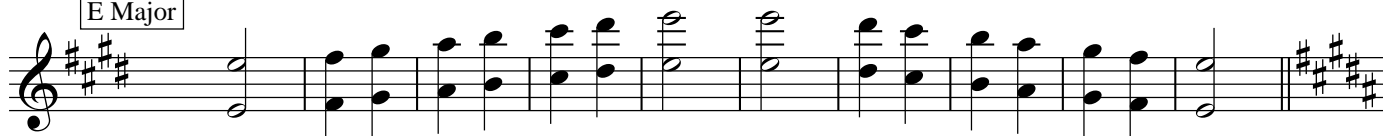
Concert G Major

A Major



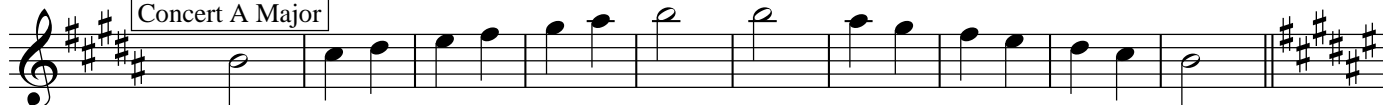
Concert D Major

E Major



B Major - Enharmonic to C Flat Major

Concert A Major



Concert E Major

F# Major - Enharmonic to G Flat Major



Concert B Major - Enharmonic to C Flat Major

C Sharp Major - Enharmonic to D Flat Major

